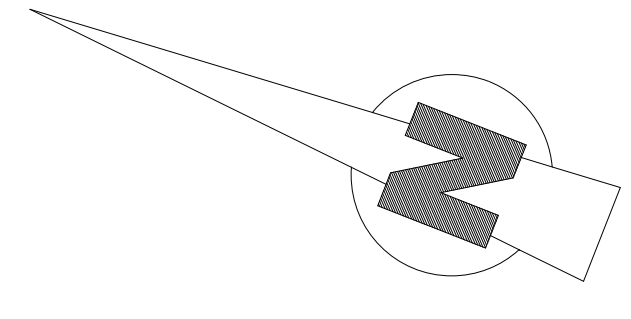
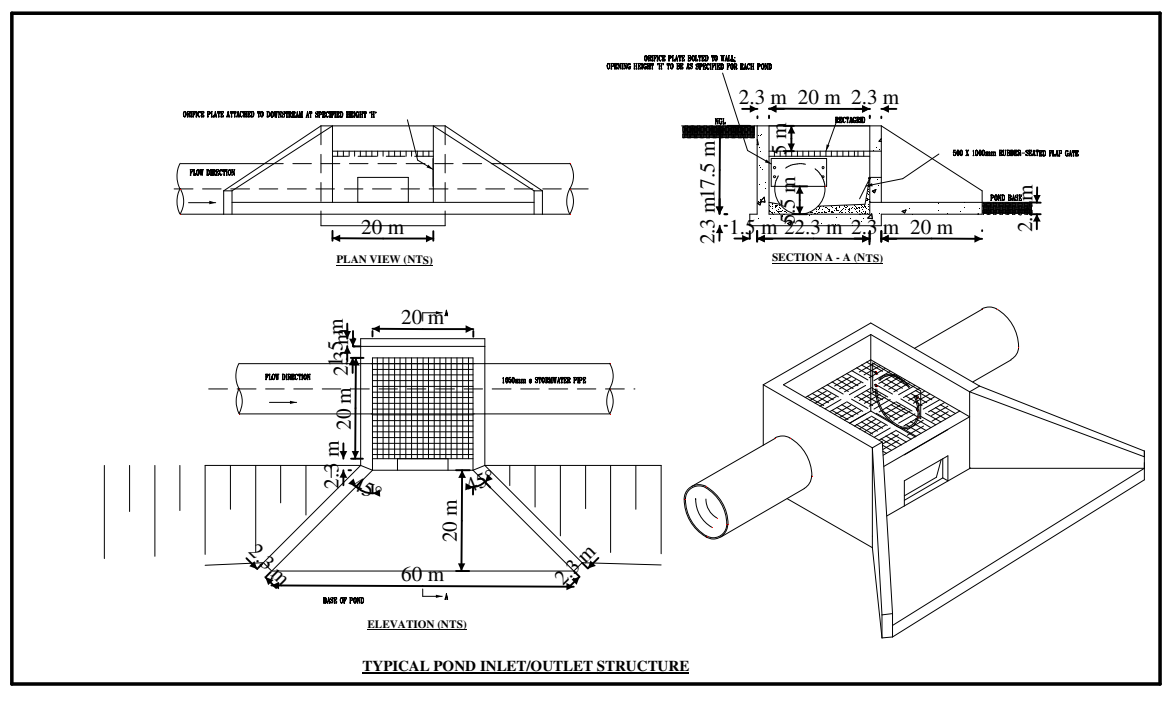




- NOTES:**
- 1) STORM WATER MANHOLES ARE PREFABRICATED CONCRETE MANHOLES (SEE SW 3 & 4).
 - 2) BACKFILLING OF TRENCHES IN ACCORDANCE WITH SABS 1200 DR 5.6 AND 5.7 AS WELL AS SABS 1200 LB DRAWING LB-1 AND LB-2.
 - 3) STORM WATER PIPES ARE 300mm ø TO 525mm ø, 600mm ø CLASS 75D AND 750mm ø CLASS 50D SPIGOT & SOCKET PIPES.
 - 4) STORM WATER CATCHPITS TO BE CONSTRUCTED IN ACCORDANCE WITH STANDARD DRAWING SW5.
 - 5) SUBSOIL DRAINS AS PER DRAWING SW1.
 - 6) MANHOLE FOR SUBSOIL DRAIN AS PER DRAWING SW5.

- LEGEND:**
- CLASS D100 STORM WATER PIPE (ø SHOWN ON PLAN) ————
 - STORM WATER MANHOLE ○
 - 375mm ø ERF CONNECTION ————



CHECKED	L.W.(CAD)	FEB 2009	NAGESIEN	SCALE AS DRAWN
DRAWN	AVDS	FEB 2009	GETEKEN	1:1500
DESIGNED			ONTWERP	SKAAL SOOS GETEKEN
SURVEYED			OPGEMEET	SURVEY DATUM
SURV DISK No			SURV DISK N°	M.S.L.
CAD DISK No			CAD DISK N°	OPMEET DATUM

100 MM ON ORIGINAL DRAWING

100 MM OP OORSPRONKLIKE TEKENING

ROBERT LESLIE
 CONSULTING ENGINEERS - RAADGEWENDE INGENIEURS

10 PINEHILL CENTRE
 17 ME ROTHSCHILD STREET
 PAROW - NORTH
 7500

TEL: (021) 930-7154 FAX: (021) 930-4600 E-MAIL: rleslie@rleslie.net

F				
E				
D				
C				
B				
A				
DESCRIPTION	BESKRYWING	DATE	PR. ENG.	
		DATUM	PR. ING.	
AMENDMENTS	WYSIGINGS			

CLIENT/KLIENT

CONS. ENG./RAADG. IN

H.A. MOSER P. ENG.
 ECSA REG. NO 730377

PRECIOUS PROSPECT TRADING 168 (PTY) LTD

DEVELOPMENT OF FARM 725/61, KRAAIFONTEIN (BUH-REIN ESTATE)

ROAD & STORM MASTERPLAN

DRAWING NO.	08P0341
TEK. NR.	
AMENDMENTS	
WYSIGINGS	